

QTL Mapping using Diversity Outbred Mice

Daniel M. Gatti

08 October 2013

1 Introduction

Quantitative Trait Locus (QTL) mapping in DO mice is performed in several steps. First, we use the founder haplotype contributions to perform linkage mapping. In the mapping model, we adjust for kinship between DO mice using the R package QTLRel. Then, we perform permutations to determine and empirical significance threshold. Next, we select chromosomes with QTL peaks above the significance threshold, examine the founder allele effects and determine support intervals. Finally, we impute the founder SNPs onto the DO genomes to perform association mapping in the QTL intervals.

2 Mapping Models

2.1 Linkage Mapping

Linkage mapping involves the use of founder haplotype probabilities. We perform point mapping at each marker on the array. We fit an additive model that regresses the phenotype on the eight founder haplotype contributions and incorporates an adjustment for the kinship between samples.

$$y = X\alpha + H\beta + Zu + \varepsilon \tag{1}$$

where:

- n is the number of samples
- y is an $n \times 1$ vector of phenotype values for each sample
- X is an $n \times p$ matrix of p fixed covariates (sex, diet, etc.)
- α is a $p \times 1$ vector of fixed effects
- H is an $n \times 8$ matrix of founder haplotype contributions (each row sums to 1)
- β is an 8×1 vector of founder haplotype effects
- Z is an $n \times n$ matrix of error covariances between samples
- u is an $n \times 1$ vector of ???
- ε is an $n \times 1$ vector of residual errors

2.2 Association Mapping

Between each pair of markers, we assign the genotype state with the highest probability to each DO sample. We then query the Sanger Mouse Genomes SNP file to obtain all of the founder SNPs in the interval.

For each Sanger SNP, we impute the Sanger SNPs onto DO genomes as follows:

$$a_j = \sum_{i=1}^8 s_i h_{ij} \quad (2)$$

where:

- a is the allele call (coded as 0, 1 or 2) for sample j
- s is the Sanger founder allele call (coded as 0 or 1)
- h is the founder haplotype contribution of founder i for sample j

$$y = X\alpha + A\beta + Zu + \varepsilon \quad (3)$$

where:

- n is the number of samples
- y is an $n \times 1$ vector of phenotype values for each sample
- X is an $n \times p$ matrix of p fixed covariates (sex, diet, etc.)
- α is a $p \times 1$ vector of fixed effects
- A is an $n \times 3$ matrix of imputed allele calls
- β is an 3×1 vector of allele effects
- Z is an $n \times n$ matrix of error covariances between samples
- u is an $n \times 1$ vector of ???
- ε is an $n \times 1$ vector of residual errors

3 QTL Mapping

We will use example data from Svenson et.al, *Genetics*, 2012. Briefly, 149 mice (75 F, 74 M) were placed on either a chow ($n = 100$) or a high fat diet ($n = 49$). A variety of clinical phenotypes were measured at two time points, roughly 14 weeks apart. In this example, we will map the hemoglobin distribution width (HDW) at the second time point. We will load this data from the Bioconductor data package `MUGAExampleData`.

```
> library(DOQTL)
> library(MUGAExampleData)
> data(pheno)
> data(model.probs)
```

QTL mapping requires phenotype and genotype data. Here, we have a `data.frame` of phenotypes called `pheno` and a 3D array of founder haplotype contributions (num.samples x 8 founders x num.markers) called `model.probs`. The sample IDs must be in `rownames(pheno)` and `dimnames(model.probs)[[1]]` and they must match each other. We will map the hemoglobin distribution width at time point 2 (HDW2).

First, we need to create a kinship matrix using the founder contributions.

```
> K = kinship.probs(model.probs)
```

Second, we need to create a matrix of additive covariates to run in the model. In this case, we will use sex, diet and CHOL1. Note that the sample IDs must be in `rownames(covar)`.

```
> covar = data.frame(sex = as.numeric(pheno$Sex == "M"), diet = as.numeric(pheno$Diet == "hf"))
> rownames(covar) = rownames(pheno)
```

Third, we need to get the marker locations on the array.

```
> load(url("ftp://ftp.jax.org/MUGA/muga_snps.Rdata"))
```

Fourth, we map the phenotype using `scanone`.

```
> qtl = scanone(pheno = pheno, pheno.col = "HDW2", probs = model.probs, K = K,
+             addcovar = covar, snps = muga_snps)
```

```
[1] "Mapping with 141 samples."
```

```
[1] "Mapping with 7654 markers."
```

```
[1] "HDW2"
```

```
Warning: solution lies close to zero for some positive variance components, their standard errors may not be reliable
```

```
Warning: solution lies close to zero for some positive variance components, their standard errors may not be reliable
```

Fifth, we run permutations to determine significance thresholds. We recommend running at least 1,000 permutations. In this demo, we run 100 permutations to save time.

```
> perms = scanone.perm(pheno = pheno, pheno.col = "HDW2", probs = model.probs,
+                    addcovar = covar, snps = muga_snps, nperm = 100)
> thr = quantile(perms, probs = 0.95)
```

We then plot the LOD curve for the QTL.

```
> plot(qtl, sig.thr = thr, main = "HDW2")
```

The largest peak appears on Chr 9. The linkage mapping model (Eqn. 1) produces an estimate of the effect of each founder allele at each marker. We can plot these effects (model coefficients) on Chr 9 to see which founders contribute to a high HDW.

```
> coefplot(qtl, chr = 9)
```

Note that the DO mice with alleles from three strains, 129S1/SvImJ, NZO/HILtJ and WSB/EiJ, have lower changes in cholesterol than the other five strains. Remember these strains because they will appear again below. We then determine the width of the QTL support interval using `bayesint`. Note that this

function only provides reasonable support intervals if there is a single QTL on the chromosome.

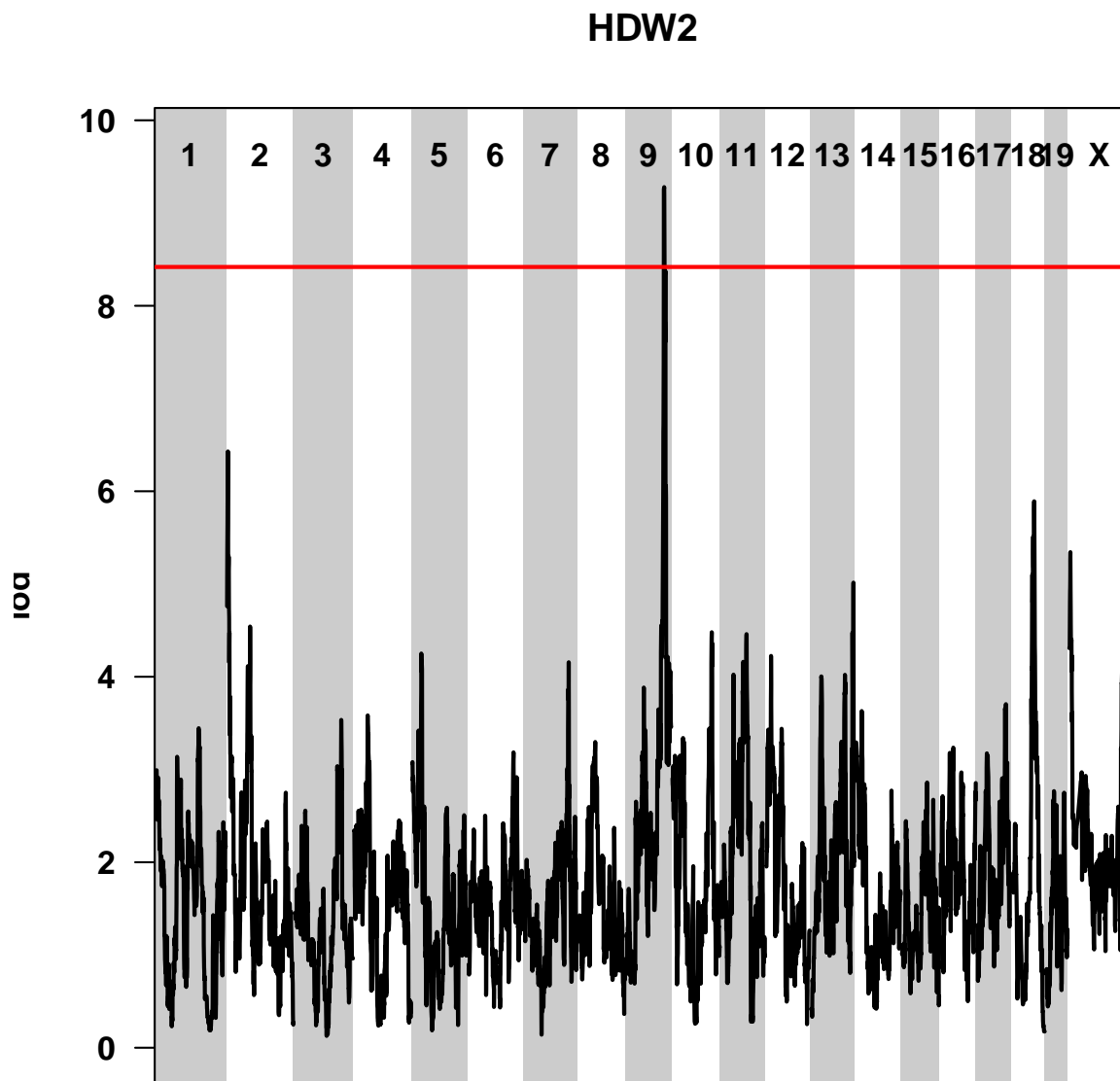


Figure 1: QTL plot of HDW2. The LOD of the mode in Eqn. 1 is plotted along the mouse genome. The red line is the $p < 0.05$ significance threshold.

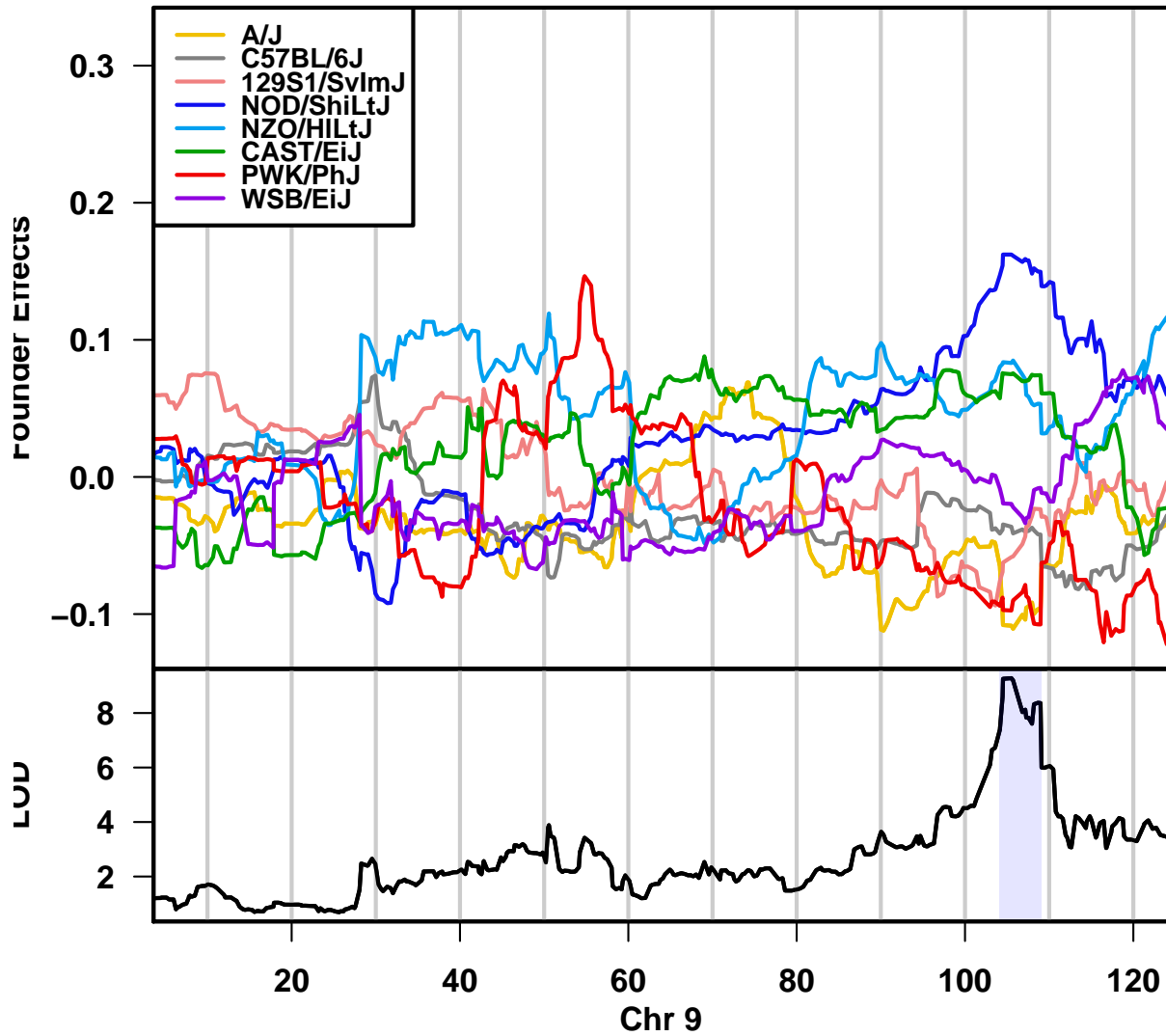


Figure 2: Coefficient plot of HDW2 on Chr 9. The top panel shows the 8 estimated founder allele effects along Chr 9. The NOD/ShiLtJ allele contributes to high values and the A/J and PWK/PhJ alleles contribute to low values. The bottom panel shows the LOD score.

```

> interval = bayesint(qtl, chr = 9)
> interval

      marker chr      pos      cM perc.var      lrs      lod
UNC090280590 UNC090280590   9 104.1423 56.535 22.27697 34.02250 7.387892
UNC091160886 UNC091160886   9 105.5128 56.743 27.13349 42.73303 9.279360
UNC090227520 UNC090227520   9 109.0960 59.642 18.50575 27.62609 5.998929
      p neg.log10.p
UNC090280590 1.705843e-05 4.768061
UNC091160886 3.755845e-07 6.425292
UNC090227520 2.569688e-04 3.590120

```

The QTL support interval is 4.7 Mb wide. Finally, we narrow the candidate gene list by imputing the founder SNPs onto the DO genomes. This idea is essentially association mapping in an outbred population.

```

> ma = assoc.map(pheno = pheno, pheno.col = "HDW2", probs = model.probs, K = K,
+               addcovar = covar, snps = muga_snps, chr = interval[1,2],
+               start = interval[1,3], end = interval[3,3])

```

```

[1] "Mapping with 135 samples."
[1] "Retrieving SNPs..."
[1] "Retrieved 139299 SNPs."
[1] "Retaining 127565 high quality SNPs."
[1] "Retaining 65528 polymorphic SNPs."
[1] "Calculating mapping statistic..."

```

Warning: solution lies close to zero for some positive variance components, their standard errors may not

```

> tmp = assoc.plot(ma, thr = 4)
> unique(tmp$sdps)

```

NULL

We can get the genes in the QTL interval using the `get.mgi.features()` function.

```

> mgi = get.mgi.features(chr = interval[1,2], start = interval[1,3],
+                       end = interval[3,3], type = "gene", source = "MGI")
> nrow(mgi)

```

```

[1] 220

```

```

> head(mgi)

```

	seqid	source	type	start	stop	score	strand	phase	ID
1	9	MGI	gene	104002544	104153483	.	+	.	MGI:MGI:1921275
6	9	MGI	gene	104151282	104262930	.	-	.	MGI:MGI:2676368
923	9	MGI	gene	104262105	104263617	.	+	.	MGI:MGI:5610791
939	9	MGI	gene	104288240	104337728	.	-	.	MGI:MGI:1928480
991	9	MGI	gene	104301928	104304909	.	-	.	MGI:MGI:5610416
1158	9	MGI	gene	104355987	104385032	.	+	.	MGI:MGI:5579254

Name Parent

```

[1] "Mapping with 135 samples."
[1] "Retrieving SNPs..."
[1] "Retrieved 139299 SNPs."
[1] "Retaining 127565 high quality SNPs."
[1] "Retaining 65528 polymorphic SNPs."
[1] "Calculating mapping statistic..."
Warning: solution lies close to zero for some positive variance components, their standard errors may not

```

NULL

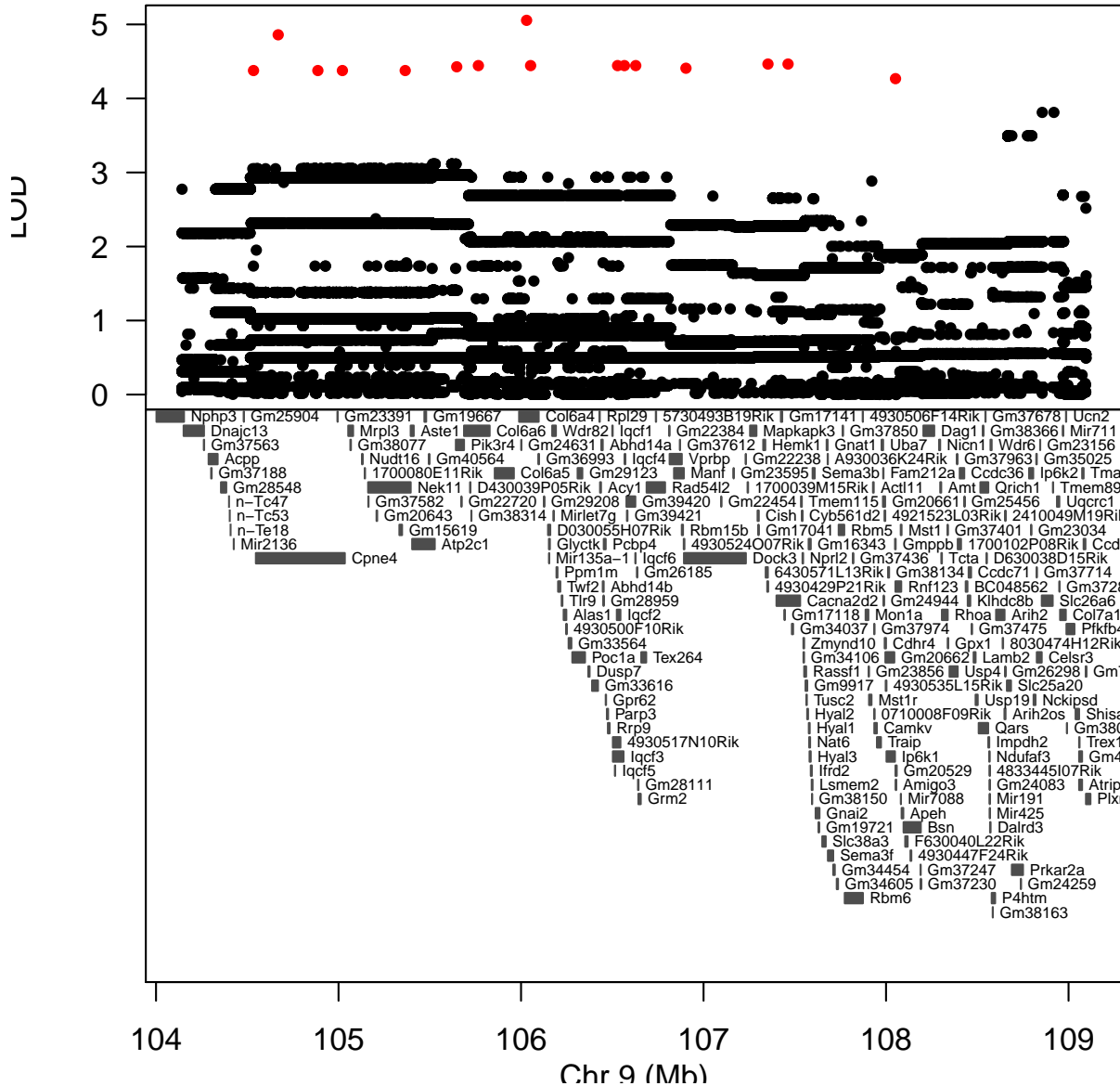


Figure 3: Association mapping plot of HDW2 in the Chr 9 support interval. The top panel shows the LOD score from association mapping (Eqn. 3) in the QTL support interval. The bottom panel shows the genes and non-coding RNAs from the Mouse Genome Informatics database.

```

1      Nphp3      NA
6      Dnajc13    NA
923    Gm37563    NA
939    Acpp       NA
991    Gm37188    NA
1158   Gm28548    NA

```

```

                                                    Dbxref
1      VEGA:OTTMUSG00000031730,NCBI_Gene:74025,ENSEMBL:ENSMUSG00000032558
6      VEGA:OTTMUSG00000049291,NCBI_Gene:235567,ENSEMBL:ENSMUSG00000032560
923    VEGA:OTTMUSG00000049370,ENSEMBL:ENSMUSG00000104040
939    VEGA:OTTMUSG00000024988,NCBI_Gene:56318,ENSEMBL:ENSMUSG00000032561
991    VEGA:OTTMUSG00000049372,ENSEMBL:ENSMUSG00000102183
1158   VEGA:OTTMUSG00000049293,NCBI_Gene:102636046,ENSEMBL:ENSMUSG00000099599
                                                    mgiName      bioType
1      nephronophthisis 3 (adolescent) protein coding gene\r
6      DnaJ heat shock protein family (Hsp40) member C13 protein coding gene\r
923    predicted gene%2c 37563      unclassified gene\r
939    acid phosphatase%2c prostate protein coding gene\r
991    predicted gene%2c 37188      unclassified gene\r
1158   predicted gene 28548          lincRNA gene\r

```

There are 169 genes in the QTL support interval. Several SNPs have LOD scores above 4. This is a somewhat arbitrary cutoff and an appropriate threshold will be supplied in future version of DOQTL. In this case, there may be more than one variant that influences the phenotype.

4 SessionInfo

```
> sessionInfo()
```

```

R version 3.3.1 (2016-06-21)
Platform: x86_64-pc-linux-gnu (64-bit)
Running under: Ubuntu 16.04.1 LTS

```

```
locale:
```

```

[1] LC_CTYPE=en_US.UTF-8      LC_NUMERIC=C
[3] LC_TIME=en_US.UTF-8       LC_COLLATE=C
[5] LC_MONETARY=en_US.UTF-8   LC_MESSAGES=en_US.UTF-8
[7] LC_PAPER=en_US.UTF-8      LC_NAME=C
[9] LC_ADDRESS=C              LC_TELEPHONE=C
[11] LC_MEASUREMENT=en_US.UTF-8 LC_IDENTIFICATION=C

```

```
attached base packages:
```

```

[1] stats4      parallel  stats      graphics  grDevices  utils      datasets
[8] methods     base

```

```
other attached packages:
```

```

[1] MUGAExampleData_0.107.0      DOQTL_1.10.0
[3] VariantAnnotation_1.20.0      Rsamtools_1.26.0
[5] SummarizedExperiment_1.4.0    Biobase_2.34.0
[7] BSgenome.Mmusculus.UCSC.mm10_1.4.0 BSgenome_1.42.0

```


[9]	rtracklayer_1.34.0	Biostrings_2.42.0
[11]	XVector_0.14.0	GenomicRanges_1.26.0
[13]	GenomeInfoDb_1.10.0	IRanges_2.8.0
[15]	S4Vectors_0.12.0	BiocGenerics_0.20.0

loaded via a namespace (and not attached):

[1]	DEoptimR_1.0-6	regress_1.3-14	class_7.3-14
[4]	prabclus_2.2-6	GenomicFeatures_1.26.0	bitops_1.0-6
[7]	iterators_1.0.8	tools_3.3.1	zlibbioc_1.20.0
[10]	biomaRt_2.30.0	mclust_5.2	rhdf5_2.18.0
[13]	annotate_1.52.0	RSQLite_1.0.0	lattice_0.20-34
[16]	Matrix_1.2-7.1	foreach_1.4.3	DBI_0.5-1
[19]	mvtnorm_1.0-5	hwriter_1.3.2	trimcluster_0.1-2
[22]	cluster_2.0.5	gtools_3.5.0	fpc_2.1-10
[25]	diptest_0.75-7	nnet_7.3-12	grid_3.3.1
[28]	robustbase_0.92-6	flexmix_2.3-13	AnnotationDbi_1.36.0
[31]	QTLRel_0.2-15	XML_3.98-1.4	BiocParallel_1.8.0
[34]	gdata_2.17.0	kernlab_0.9-25	corpcor_1.6.8
[37]	modeltools_0.2-21	codetools_0.2-15	GenomicAlignments_1.10.0
[40]	annotationTools_1.48.0	MASS_7.3-45	RUnit_0.4.31
[43]	xtable_1.8-2	RCurl_1.95-4.8	doParallel_1.0.10